



SERIES 60

1-1/4" x 1" End Suction Centrifugal Pump

The Series 60 pump delivers exceptional efficiency and durability for a wide range of applications, including agricultural, commercial, industrial, and OEM systems. Designed for reliability, it is close-coupled to standard NEMA "C" face motors for simplified installation and maintenance.

Robust Construction

- High-quality cast iron body for strength and longevity
- Bronze impellers and stainless steel fasteners for superior corrosion resistance
- Dynamically balanced impellers for improved efficiency and extended bearing life
- Standard carbon/ceramic/Viton mechanical seal-self-adjusting and resistant to corrosion, suitable for most liquids

Flexible Configurations

Available in multiple options to meet diverse requirements:

- Close-coupled models
- Hydraulic motor-driven versions
- MP PumPAK® assembly for quick mounting to NEMA C frame motors

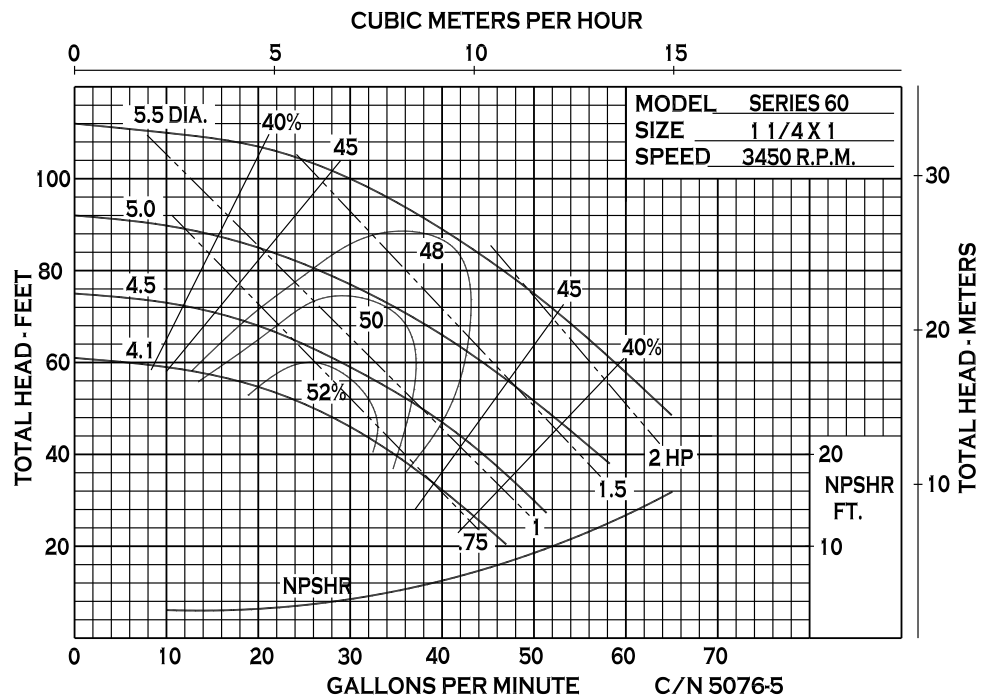
SPECIFICATIONS:

Suction / Discharge	1-1/4" x 1" NPT
Materials of Construction	Cast Iron, Ductile Iron
Flow	Up to 65 GPM (14.8 m ³ /h)
Head Feet	Up to 112' (34.1 m)
Impeller	5.47" (138.9 mm) enclosed, Cast Iron, Bronze or Aluminum
Motor	Up to 2 HP (1.47 kW)
Seal	Special seal material combinations available (consult factory), Standard carbon / ceramic / Viton
Drive Options	Close coupled 56C Hydraulic motor 0.37 cu. in. (6.06 cm ³) Hydraulic motor 0.45 cu. in. (7.37 cm ³) Hydraulic motor 0.58 cu. in. (9.50 cm ³) PumPAK® (without motor)
Max Solid Size	.11" (2.79 mm)

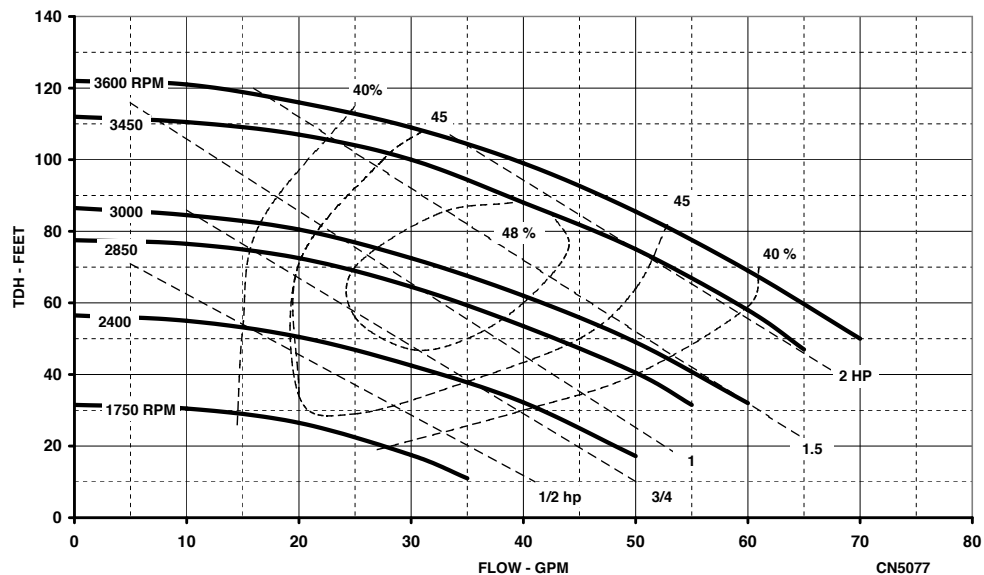
Application:

- Agricultural
- Commercial
- Industrial
- OEM

PERFORMANCE CURVES



SERIES 60
5.50 Impeller

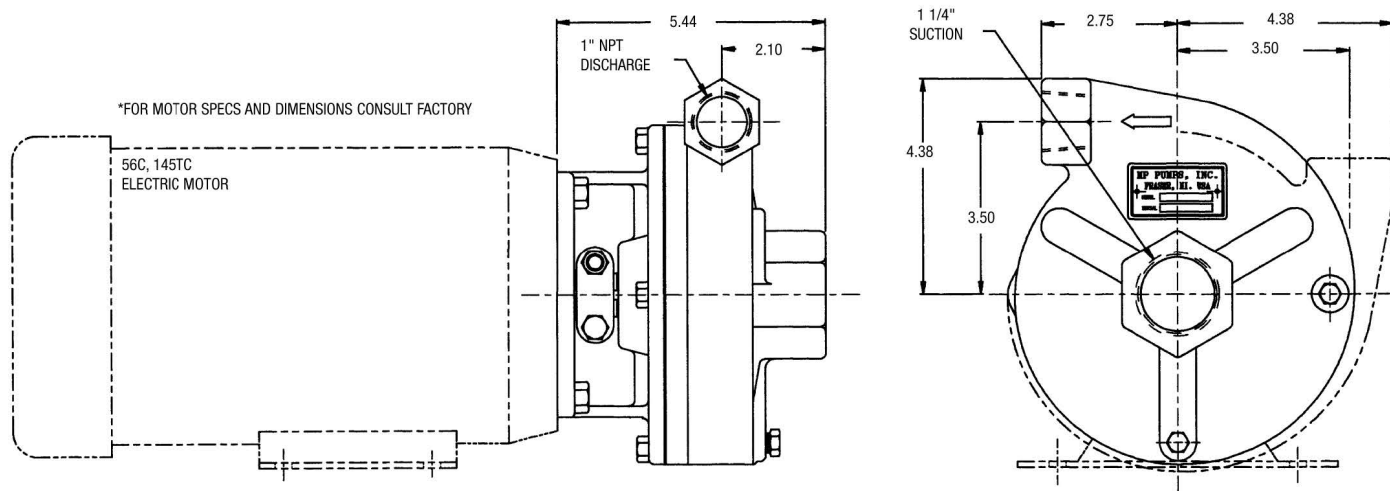




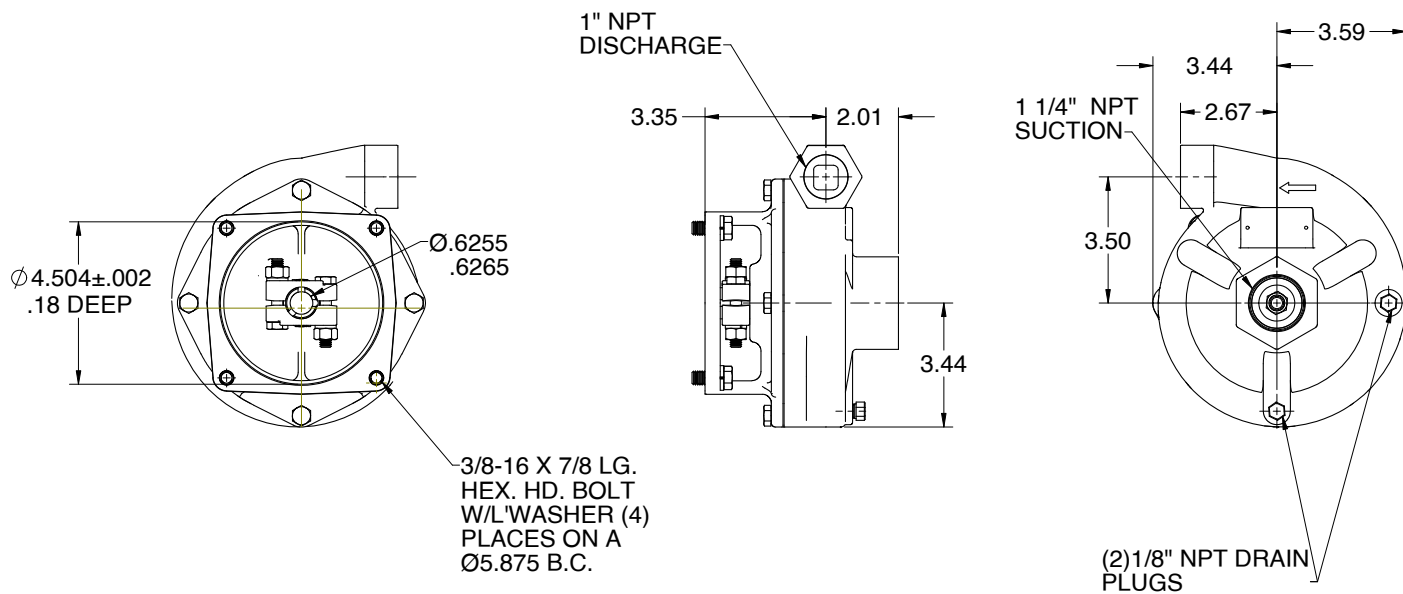
An Ingersoll Rand Business

SERIES 60

DIMENSIONS



S-60 PUMPAK INSTALLATION (MP27667)



* For complete parts lists and troubleshooting guidance, please refer to the MP Pumps Installation Operation & Maintenance (IOM) Manual.



12500 South Pulaski Road
Alsip, IL 60803, USA
Phone (800) 563-8006